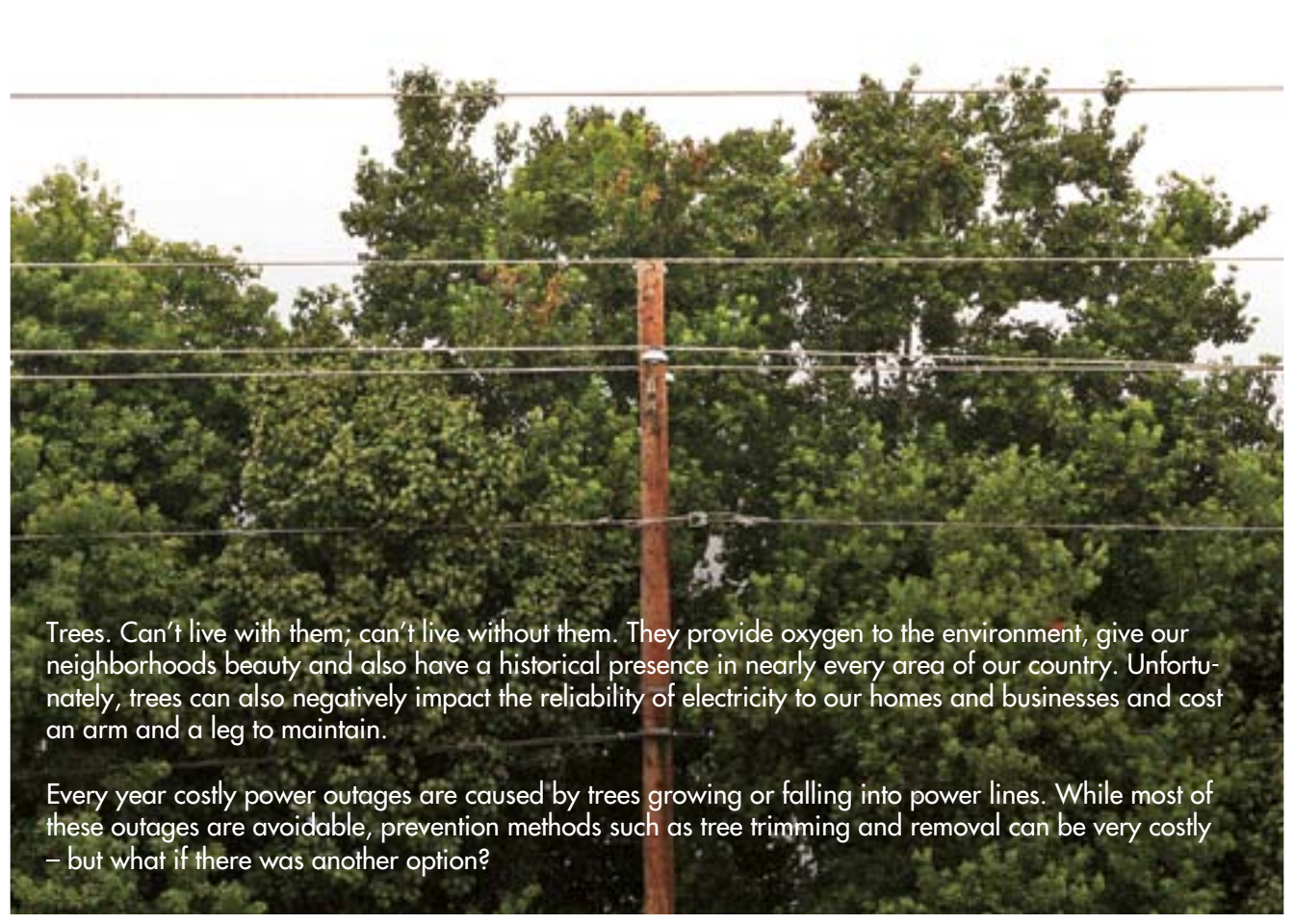


A close-up photograph of tree bark, showing a highly textured, cracked, and fissured surface. The bark is dark brown to greyish, with deep vertical and diagonal grooves. The lighting highlights the rough, uneven texture.

**TREE GROWTH
REGULATOR**

ecko



Trees. Can't live with them; can't live without them. They provide oxygen to the environment, give our neighborhoods beauty and also have a historical presence in nearly every area of our country. Unfortunately, trees can also negatively impact the reliability of electricity to our homes and businesses and cost an arm and a leg to maintain.

Every year costly power outages are caused by trees growing or falling into power lines. While most of these outages are avoidable, prevention methods such as tree trimming and removal can be very costly – but what if there was another option?

Trim Your Trimming Costs

Right now you're probably a year or two behind your ideal trimming cycle, with cycle busters creating additional problems. Getting ahead of your tree cycle seems next to impossible. You can either try to keep up with these growing problems, that are truly growing, or you can get ahead. Utilizing Tree Growth Regulators (TGR's) in your line clearance program helps spread those expenses out over a longer time period, giving you the opportunity to convert your program from being reactive to preventative.

The use of TGR's will not only aid in preventing power outages, but will also improve service reliability overall. Extend the investment of your trimming dollars, enjoy the benefit of trimming cycle buster trees less often and take comfort in an overall decrease of activity on your circuits.

Whether you trim and then treat or you simply treat trees that are currently clear of lines, you'll see savings in not only the lack of trees that need to be trimmed, but also the amount of regrowth that requires trimming in the future.



How It Works

We assess each treatment uniquely. The tree species, trunk size (dbh) and canopy are all considered. Using this data, we apply the prescribed amount of product per tree, resulting in a treatment that consistently works.

We also, for each tree, include a GPS location, and informational breakdown. This makes our service fully auditable and easily integrated into a GIS program.



Less Is More

The use of a growth regulator is not only cheaper than trimming for a single application, but also boasts future savings that many don't consider. Not only are you trimming less often, but you're also trimming a lower volume of limbs than during a typical cycle (up to 50% with many species). This means less crew hours, less wood to haul, fewer branches to chip, less biomass to dispose of and enhanced safety and production for tree crews.

With all of those components combined, you're looking at a significant decrease in your cost per mile stretching your dollars over more miles. It turns out money can grow on trees.



We Are PR

When it comes to cutting on a homeowner's tree, emotions can run high. Trees not only contribute to the monetary value, but also the aesthetic value of property. Experience tells us this is not an issue to be taken lightly.

Not only will your customers be pleased by the improved service reliability by utilizing TGR's, but they'll also take comfort in the fact that their trees and property won't be visited as frequently by tree crews.



Check Your Mileage

In three years, Tree Growth Regulators will more than pay themselves off, allowing you to tackle more and more mileage, year after year.

Since the late 90's, Edko has successfully performed treatments on over a million trees for more than a dozen utility companies all over the United States. Results have varied from 35% in growth reduction to as much as 65%, saving our customers millions of dollars in line clearance costs.



FOR MORE INFORMATION:

Contact us at
info@edkollc.com
or 1.800.256.8671

www.edkollc.com